

行政院國家科學委員會專題研究計畫 成果報告

人類干擾素計測用免疫反應型生物感測器之開發研究

計畫類別：個別型計畫

計畫編號：NSC93-2213-E-041-002-

執行期間：93年08月01日至94年07月31日

執行單位：嘉南藥理科技大學生物科技系(所)

計畫主持人：周淑芬

報告類型：精簡報告

處理方式：本計畫涉及專利或其他智慧財產權，2年後可公開查詢

中 華 民 國 94 年 10 月 25 日

Development of an Immunosensor for Human Interferon- γ Based on Surface Plasmon Resonance

Shu-Fen Chou

Department of Biotechnology, Chia-Nan University of Pharmacy and Science, Tainan, Taiwan, R.O.C.

*Corresponding author: Dr. Chou, Shu-Fen

E-mail: chousf26@ms58.hinet.net

FAX: +886-6-2666411

Abstract

A direct human interferon- γ immunosensor was developed using anti-human interferon- γ monoclonal antibodies (MAbs) immobilized on the gold surface of a self-assembled surface plasmon resonance (SPR) apparatus. A kind of self-assembled monolayer (SAM) prepared by cystamine-protein A method was applied to immobilize the MAbs. Ten cycles of measurements could be performed on the same chip regenerated with a 0.1 M HCl solution. A linear relationship existed between the angle shifts (millidegrees) and the log values of interferon- γ concentrations in the range from 0.1 to 400 ng/mL in buffer and artificial human serum. When used for 15 days, the angle shifts were all >95% of those on the response at the first day. A 1 M NaOH solution was used for clearing nonspecific binding in artificial human serum. The SPR sensor offers advantages of simplicity of immobilization, high sensitivity, high specificity, low sample requirement, high reusability, no label and no pretreatment etc.

Keywords: human interferon- γ , immunosensor, surface plasmon resonance (SPR), self-assembled monolayer (SAM)

1. Introduction

Interferons (IFNs) are glycoproteins produced by animal cells in response to a wide variety of agents including viruses, double-stranded RNA, and mitogens (DeMaeyer and DeMaeyer-Guignard, 1988; Stewart, 1979). Type- I IFNs include INF- α (leukocyte-IFN) that are produced by dendritic cells and monocytes, and IFN- β produced by several mesenchymal cell types. All type- I IFNs share the same receptor (IFNR- I) which is broadly expressed on most cell types (Leonard, 1999).

IFN- γ , also known as type- II or immune IFN, is produced by T-lymphocytes in response to stimulation by antigen or mitogen, and natural killer (NK) cells (Curran et al., 1994; Farrar and Schreiber, 1993). This property makes it a key protein in cellular

immunity and it is used in several T-cell assays that measure IFN- γ production upon antigen-specific stimulation. The cell surface receptors for IFN- γ (IFNR- Π) are distinct from those recognized by type- I IFNs (Aguet et al., 1988; Mogensen et al., 1999). The immunoregulatory and effector functions of IFN- γ include the induction of a state of cellular resistance to virus infection and other intracellular pathogens (Farrar and Schreiber, 1993; Trinchieri and Perussia, 1985). In contrast to type- I IFNs, IFN- γ displays a pronounced species-specific mode of action although cross-reactivity was observed, for example, between bovine, ovine and equine IFN- γ (Radford et al., 1991; Yilma et al., 1982).

Recently, the methods for the characterization and quantification of interferon- γ are ELISA, Western blotting, as well as flow cytometric and microscopic analysis (Gutmann et al., 2005). The major quantitative detection method, ELISA, the nonisotopic immunoassay, based on enzymes or fluorescein, has high sensitivity and is fully automated on many platforms (Morgan et al., 1996). However, these methods which must rely on the detection of labeled molecules are complicated and time-consuming.

Immunosensors, which combine the inherent specificity of antigen-antibody (Ag-Ab) reaction with high sensitivity of various physical transducers, have currently gained attention in clinical diagnosis (Kanazawa and Gordon, 1985). This study focused on a self-assembled surface plasmon resonance (SPR) apparatus. The concept of surface plasmons (SP) is coming from the plasmon approach of Maxwell's theory: the free electrons of a metal are treated as an electron liquid of high density (plasmon), and density fluctuations happening on the surface of such a liquid are called plasmons, SP (Raether, 1988). According to the Maxwell's theory, SP can propagate along a metallic surface and have a spectrum of eigen frequencies ω related to the wavevector (κ) by a dispersion relation:

$$\kappa_{sp} = \omega c^{-1} [\epsilon_1 \epsilon_2 / (\epsilon_1 + \epsilon_2)]^{1/2}$$

where c is the speed of light in vacuum, ω is frequency, ϵ_1 and ϵ_2 are the dielectric constant of the metal and of the medium in contact with it, respectively. Practically, SPR is realized in the so-called Kretschmann configuration (Kretschmann and Raether, 1968), where thin metal layer is deposited on a glass substrate, and plasmons are induced by p -polarized light undergoing total internal reflection (TIR) on the glass surface. More precisely, they are excited by an evanescent wave associated with TIR and penetrating through the metal thickness up to the metal/air interface. Exact matching of photons and plasmons happens for the resonance condition:

$$\omega c^{-1} \epsilon_0^{1/2} \sin \Theta_R = \omega c^{-1} [\epsilon_1 \epsilon_2 / (\epsilon_1 + \epsilon_2)]^{1/2}$$

where ϵ_0 is the dielectric constant of glass prism, Θ is the internal angle of incidence of the light beam, and Θ_R is the resonance angle. Θ_R is a sensitive function of

the dielectric constants of the two contacting media. SPR occurs at a given angle of incidence of the light at which thus the reflected light disappears. The resonance angle depends on the optical properties of the medium outside the metal film, which can be used e.g. to detect Ag-Ab binding reactions on the metal surface.

In this study, immobilization of anti-interferon- γ monoclonal antibodies (MAbs) on the gold surface of sensor chip is also discussed. When the protein molecules, such as IgG, are immobilized on the sensor surface, the activity is usually less than that in aqueous phase. The main reason is due to the random orientation and stereo hindrance of protein molecules on the solid surface. Recently, the use of self-assembled monolayers (SAMs) in various fields of research is rapidly growing. In particular, many biomedical fields apply SAMs as an interface-layer between a metal surface and a solution. The pioneers in the assembly of sulfur-containing molecules noticed that dialkane sulfides form highly ordered monolayers on metal surfaces. Van der Waals forces between methylene groups orient and stabilize the monolayer. The structure of a SAM depends on the morphology of the metal. Au (III) is mostly applied for the formation of monolayers, because it is reasonably inert (Wink et al., 1997). For example, if the amino and sulfur-containing molecules, cystamine, are adsorbed on the gold surface, the amino groups of cystamine may easily bind to carboxyl groups in the IgG molecule by the interaction presumably electrostatic, hydrogen bonding etc., not bind to the amino groups of the Ag binding sites in the IgG molecule. However, cystamine-Ab binding can not supply a good orientation to binding of Ag. For the construction of a well-defined antibody surface, protein A is used as a binding material. Protein A, a cell wall component of *Staphylococcus aureus*, binds with the Fc portion of the Ab (Harlow, et al, 1999), so the paratopes of Ab molecules are located on the surface of the protein A coating layer. Therefore, protein A-mediated Abs immobilization leads to highly efficient immunoreactions and enhances detection system performance (Lee, et al., 2004). The immobilization method using cystamine combined with protein A to bind the Abs was discussed in this study.

We report methods for immobilizing anti-interferon- γ MAbs on gold surface, the reusabilities of coated chip, and the operating stability of the SPR immunosensor. Furthermore, we measured interferon- γ concentrations in buffer and artificial human serum using this sensor and compared this SPR method with ELISA in mouse serum samples.

2. Experimental

2.1 Reagents

Interferon- γ from human recombinant IFN- γ expressed in *E. coli*, a 17 kDa protein containing 143 amino acid residues, was purchased from Sigma-Aldrich Chem. Co. St. Louis, U.S.A. Anti-interferon- γ MAbs were produced in our laboratory. Protein A,

cystamine dihydrochloride was purchased from Sigma-Aldrich Chem. Co. St. Louis, U.S.A. Bovine serum albumin (BSA) was obtained from Chemicon International, Inc. Temecula, CA. U.S.A. All other chemicals used were of analytical grade.

2.2 Principle and apparatus of the sensor

The basic design of the sensing chip is shown diagrammatically in the previous study (Chou, et al, 2004). Chromium and gold were successively deposited on a glass slide to give layers of approximately 5 nm and 50 nm thick, respectively. Chromium was deposited to obtain good adhesion between gold and glass slide (Yokoyama et al., 1995) (The metallic films on glass slide were produced from the Institute of Applied Mechanics of National Taiwan University, Taipei, Taiwan, R.O.C.). Subsequently, a SAM was immobilized onto the gold surface. In this study, the immobilization of MAbs onto the SAM produced in the final sensor. Then the self-assembled SPR apparatus in the Kretschmann configuration (Kretschmann and Raether, 1968) was used for monitoring the binding of specific Ags to the sensor surface. In the SPR apparatus, a beam of light from a 5 mW He-Ne laser (random polarization, $\lambda = 632.8$ nm) passed through a cube polarizer, which control the light intensity and produce *p*-polarized light at the sample. A plane/convex glass lens was used to compensate and ensure a parallel light beam into a right triangular prism. The laser beam passed through the prism and was incident on the back surface of a gold film deposited onto a glass slide. The prism and glass slide was made of BK7 glass ($n = 1.517$ at $\lambda = 632.8$ nm). The slide was sealed to the prism using optical adhesive ($n = 1.524$, Norland optical adhesive 65, Norland Products Inc., New Brunswick, N.J.). The prism was mounted on a rotating stage. All optical components were obtained from Melles Griot, Irvine, California. The CCD camera (Panasonic Color CCTV Camera, Model WV-CP230, Matsushita Communication Industrial Co., Ltd., Yokohama, Japan) connected with a computer containing the image treatment software (SpyGlass Transform 3.4) was used for detecting the reflected light. The resonance condition was determined by recording the reflected light intensity as a function of the incident angle. The SPR signal was presented as an angle shift in millidegrees.

The entire apparatus was mounted on an optical bench in a darkroom and routinely checked for alignment before any measurements were taken.

2.3 Measurement of angle shifts by the SPR apparatus

The gold surface of the chip was treated with 1.2 M NaOH for 10 min, 1.2 M HCl for 5 min and one drop of concentrated HCl for 30 sec (Storri et al., 1998). After each step, the chip was thoroughly washed with distilled water. The chip was dried at room temperature and initial SPR angle was read. The sample solution (3 μ L) was added into the gold surface. After 10 min, the chip was washed, dried and an angle shift value was read. The 3 μ L drop was placed exactly onto the same place of the chip marked on the

gold surface in the repeated measurements. All procedures were measured at room temperature under atmospheric pressure.

2.4 Immobilization of antibodies on gold

2.4.1 Adsorption method

The chip was treated with an Ab solution ($10^6 \mu\text{g/L}$) for 1 hr. Subsequently, the chip was washed with phosphate buffered saline (PBS) (5 mM phosphate buffer, 0.15 M NaCl, pH 7.0), distilled water, and dried. After drying, an angle shift value was read. All procedures were performed at room temperature under atmospheric pressure (Chou, et al., 2004).

2.4.2 Protein A method

Five microliter of a protein A solution (1 mg protein A in 1 ml of PBS, 50 mM, pH 7.0 and 1 ml of acetate buffer, 0.1 M, pH 5.5) was added to the gold surface of the chip. After drying, the chip was immersed in distilled water for 30 min. Subsequently, $5 \mu\text{l}$ of a $10^6 \mu\text{g/L}$ Ab solution was spread over the surface. After drying, the crystal was washed with PBS, distilled water, and dried. Finally, an angle shift value was read. All procedures were performed at room temperature under atmospheric pressure (Chou, et al., 2004).

2.4.3 Cystamine-glutaraldehyde method

The chip was treated with a 10 mM cystamine solution (10 mM cystamine, 50 mM phosphate buffer, 0.15 M NaCl, pH 7.0) for 1 hr, washed with distilled water and dried. The crystal was dipped into a 10% (v/v) aqueous glutaraldehyde solution for 30 min and washed twice with distilled water. After drying, the crystal was immersed with a $10^6 \mu\text{g/L}$ Ab solution for 1 hr, washed with PBS, distilled water, and dried. The crystal was blocked with a 0.1 M glycine-PBS solution (0.1 M glycine, 50 mM phosphate buffer, 0.15 M NaCl, pH 7.0) for 30 min, and then washed with PBS, distilled water, and dried. Finally, an angle shift value was read. All procedures were performed at room temperature under atmospheric pressure (Chou, et al., 2004).

2.4.4 Cystamine method

The chip was treated with a 10 mM cystamine solution (10 mM cystamine, 50 mM phosphate buffer, 0.15 M NaCl, pH 7.0) for 1 hr, washed with distilled water and dried. The chip was then dipped into a $10^6 \mu\text{g/L}$ Ab solution for 1 hr, washed with PBS, distilled water, and dried. The chip was blocked with a 0.1 M glycine-PBS solution for 30 min, washed with PBS, distilled water, and dried. Finally, an angle shift value was read. All procedures were performed at room temperature under atmospheric pressure (Chou, et al., 2004).

2.4.5 Cystamine-Protein A method

The chip was treated with a 10 mM cystamine solution (10 mM cystamine, 50 mM phosphate buffer, 0.15 M NaCl, pH 7.0) for 1 hr, washed with distilled water and

dried. The chip was blocked with a 0.1 M glycine-PBS solution for 30 min, washed with PBS, distilled water, and dried. Then 5 μL of a protein A solution (1 mg protein A in 1 mL of PBS, 0.1 M, pH 7.0 and 1 mL of acetate buffer, 0.1 M, pH 5.5) was added to the gold surface of the chip for 30 min, washed with distilled water and dried. The chip was then blocked with a 0.1 M glycine-PBS solution for 30 min, washed with PBS, distilled water, and dried. Subsequently, 5 μL of a 1 mg/mL Ab solution was spread over the gold surface. After drying, the chip was washed with PBS and distilled water, dried and an angle shift value was read. All procedures were performed at room temperature under atmospheric pressure.

3. Results and Discussion

3.1 Reusabilities of sensor coated with anti-human interferon- γ MAbs

In this experiment, anti-interferon- γ MAbs was immobilized on the gold surface of the chip using adsorption, protein A, cystamine, cystamine-glutaraldehyde and cystamine-protein A method. Three μL of 10 ng/mL interferon- γ in PBS was applied to the gold surface for detection. The regeneration solution used was 0.1 M HCl buffer (pH 2.1) after each measurement. Fig. 1 shows that the reusability of chip adopting cystamine-protein A method was better than those of the other above-mentioned methods. The chip could continuously operate 10 cycles for 10 ng/mL of interferon- γ and the relative angle shifts (the angle shifts measured were relative to the response at the first time) were all above 95%. Generally, the formation of the stable monolayer is based on the strong adsorption of disulfides (R-S-S-R), sulfides (R-S-R), and thiol (R-SH) on a metal (particularly gold) surface. In this method, disulfide bond of cystamine (2, 2'-dithiobisethanamine, $\text{C}_4\text{H}_{12}\text{N}_2\text{S}_2$) is broken and strongly adsorbed on the gold surface. The isotype of MAbs had been classified as IgG2a in our laboratory. In this study, if the amino and sulfur-containing molecules, cystamine, adsorbed on the gold surface, the amino groups of cystamine could easily bind to the carboxyl groups in the IgG molecule by the interaction presumably electrostatic, hydrogen bonding etc., not bind to the amino groups of the Ag binding sites in the IgG molecule. The Abs on the sensor surface were random, partly multi-layers and could not supply a good orientation to binding of Ag when using adsorption, protein A, cystamine, cystamine-glutaraldehyde method. For the construction of a well-defined antibody surface, protein A is used as a binding material. Protein A (M.W. 42,000) has strongly specific binding with the Fc portion of the Ab (Harlow, et al, 1999), so the paratopes of Ab molecules are located on the surface of the protein A coating layer. Therefore, protein A-mediated Abs immobilization leads to highly efficient immunoreactions and enhances detection system performance (Lee, et al., 2004). The experimental results surely demonstrate the cystamine-protein A method was more suitable to immobilize the IgG molecule and the reusability of the chip was high. Fig.2. shows the chemical

steps of IgG2a immobilization by cystamine-protein A method. Fig.3 shows a series of SPR curves obtained by successive immobilization treatment of cystamine, protein A and anti-human interferon- γ MAbs.

3.2 Calibration curves of human interferon- γ in buffer and artificial human serum

Human interferon- γ in the buffer and artificial human serum was detected in the range 0.1 ng/mL to 1 μ g/mL using MAbs. A linear relationship existed between the angle shifts (millidegrees) and the log values of interferon- γ in the range 0.1 to 400 ng/mL in artificial human serum shown in Fig.4 (the samples containing high interferon- γ could be diluted into this range). In PBS, the similar results were obtained (data not shown). The reaction time to reach equilibrium in buffer was 10 min, but in artificial human serum was 20 min (data not shown). The regeneration buffer used was 0.1 M HCl buffer (pH 2.1) for clearing the Ags binding to the Abs. A 1 M NaOH solution was very suitable to clear nonspecific binding in artificial human serum as shown in Fig.6.

3.3 Precision

Precision data for the determination of interferon- γ (0.1-400 ng/mL) in buffer and artificial human serum by this SPR immunosensor are shown in Table 1. Three replicates per specimen were measured.

4. Conclusion

In this study, the concentrations of human interferon- γ in the buffer and artificial human serum were efficiently determined using an immunosensor based on a self-assembled SPR. A SAMs prepared by cystamine-protein A method was applied to immobilize MAbs on the gold surface of the chip. The 10 cycles of measurements could be performed on the gold surface of the same chip regenerated with a 0.1 M HCl solution for clearing the Ags binding to the Abs. A 1 M NaOH solution was used for clearing nonspecific binding in artificial human serum. A linear relationship existed between the angle shifts (millidegrees) and the log values of interferon- γ concentrations in the range from 0.1 to 400 ng/mL. The operating stability of this sensor was more than 15 days. The direct SPR immunosensor measured interferon- γ without the need for a labeled reagent and pretreatment of samples. The assay format of the sensor was more rapid and simpler than conventional methods.

References

- Aguet, M., Dembic, Z., Merlin, G., 1998. Molecular cloning and expression of the human interferon-gamma receptor. *Cell* 55, 273-280.
- Chibata, I., 1978. Immobilized Enzymes. Kodansha LTD, Tokyo, Japan.
- Chou, S.F., Hsu, W.L., Hwang, J.M. and Chen, C.Y., 2004. Biosensors and

- Bioelectronics 19, 999.
- Curran, J.A., Argyle, D.J., Cox, P., Onions, D.E., Nicolson, L., 1994. Nucleotide sequence of the equine interferon gamma cDNA. *DNA Seq.* 4, 405-407.
- Farrar, M.A. and Schreiber, R.D., 1993. The molecular cell biology of interferon-gamma and its receptor. *Annu.Rev. Immunol.* 11, 571-611.
- DeMaeyer, E. and DeMaeyer-Guignard, J., 1988. Interferons and other regulatory cytokines. John Wiley and Sons, Inc.
- Gierek, T., Kokot, F., Pilch, J., Wiecek, A., Paluch, J., Franek, E., 1995. *Otolaryngol. Pol.* 49(20), 81.
- Gutmann, S., Zawatzky, R., Muller, M., 2005. Characterisation and quantification of equine interferon gamma. *Veterinary Immunology and Immunopathology* 104, 105-115.
- Harlow, E., Lane, D., 1999. Using antibodies: a laboratory manual. Cold Spring Harbor, NY: Cold Spring Harbor Laboratory, 74-76.
- Kanazawa, K.K., Gordon, J.G., 1985. Frequency of a quartz microbalance in contact with liquid. *Anal. Chem.* 57, 1770.
- Kretschmann, E., Raether, H., 1968. *Z. Naturforsch. A* 23, 2135.
- Lee, W., Lee, D.-B., Oh, B.-K., Lee, W.-H., Choi, J.-W., 2004. Nanoscale fabrication of protein A on self-assembled monolayer and its application to surface plasmon resonance immunosensor. *Enzyme and Microbial Technology* 35, 678-682.
- Leonard, W.J., 1999. Type I cytokines and interferons and their receptors, In: Paul, W.E., (Ed.), *Fundamental Immunology*. New York.
- Mogensen, K.E., Lewerenz, M., Reboul, J., Lutfalla, G., Uze, G., 1999. The type I interferon receptor: structure, function, and evolution of a family business. *J. Interferon Cytokine Res.* 19, 1069-1098.
- Morgan, C.L., Newman, D.J., Price, C.P., 1996. Immunosensors: technology and opportunities in laboratory medicine. *Clinical Chemistry* 42(2), 193-209.
- Nakanishi, K., Karube, I., Hiroshi, S., Uchida, A., Ishida, Y., 1996. *Anal. Chim. Acta* 325, 73.
- Radford, A.J., Hodgson, A.L. Rothel, J.S., Wood, P.R., 1991. Cloning and sequencing of the ovine gamma-interferon gene. *Aust. Vet. J.* 68, 82-84.
- Raether, H., 1988. *Surface Plasmons*. Springer-Verlag, Berlin.
- Stewart, I.W.E., 1979. *The interferon system*. Springer-Verlag, New York.
- Storri, S., Santoni, T., Minunni, M., Mascini, M., 1998. Surface modification for the development of piezoimmunosensors. *Biosensors and Bioelectronics* 13(3-4), 347-357.
- Trinchieri, G. and Perussia, B., 1985. Immune interferon: a pleiotropic cytokine with multiple effect. *Immunol. Today* 6, 131-135.

- Wink, Th., van Zuilen, S.J., Bult, A., van Bennekom, W.P., 1997. Self-assembled monolayers for biosensors. *The Analyst* 122, 43-50.
- Yilma, T., McGuire, T.C., Perryman, L.E., 1982. Preliminary characterization of equine interferons and their antiviral activities on bovine, ovine, and human cells. *J. Interferon Res.* 2, 363-370.
- Yokoyama, K., 1995. Highly sensitive quartz-crystal immunosensors for multisample detection of herbicides. *Anal. Chim. Acta* 304, 139-145.

Figure legends:

Fig.1. Comparison on the reusability of chip coated with anti-human interferon- γ MAbs using different immobilization methods applied in the SPR system. Anti-human interferon- γ MAbs (I γ A8) were immobilized on the gold surface of sensor chip using the indicated four kinds of immobilization methods. 10 ng/mL of human interferon- γ in PBS (pH 7.0) was applied to the gold surface for detection. The regeneration buffer was 0.1 M HCl buffer (pH 2.1). Relative angle shift (%) means the angle shift measured is relative to the response at the first time.

Fig.2. The chemical steps of IgG2a immobilization by cystamine-protein A method

Fig.3. SPR scanning curve for each successive adlayer

The successive adlayer was obtained: the plain gold was immersed in cystamine solution for 1 hr, protein A for 30 min, and I γ A8 (IgG2a) solution for 1 hr. The SPR curves for each successive adlayer were then detected.

Fig.4. Detection of human interferon- γ in artificial human serum using anti-human interferon- γ MAbs immobilized on the gold surface of the sensor chip. The immobilized antibodies used were anti-human interferon- γ MAbs (I γ A8) and anti-BSA (control). The immobilization method used was cystamine-protein A method. PBS was used as the blank. The regeneration buffer was 0.1 M HCl buffer (pH 2.1) for clearing the Ags binding to the Abs. A 1 M NaOH solution was used for clearing nonspecific binding in artificial human serum. The inset shows the linear relationship range between angle shift (millidegree) and the log values of human interferon- γ concentration (ng/mL). The vertical bars designate the standard deviation (SD) for the mean of 3 measurements.

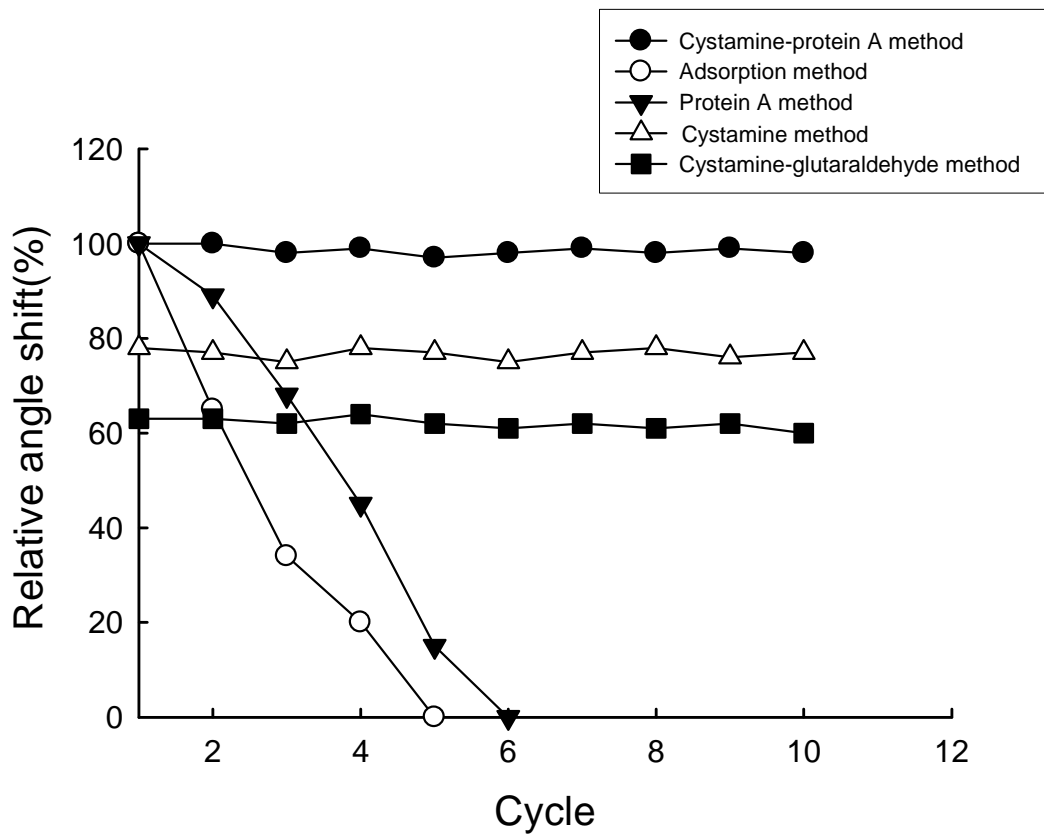


Fig.1 of Chou, S-F

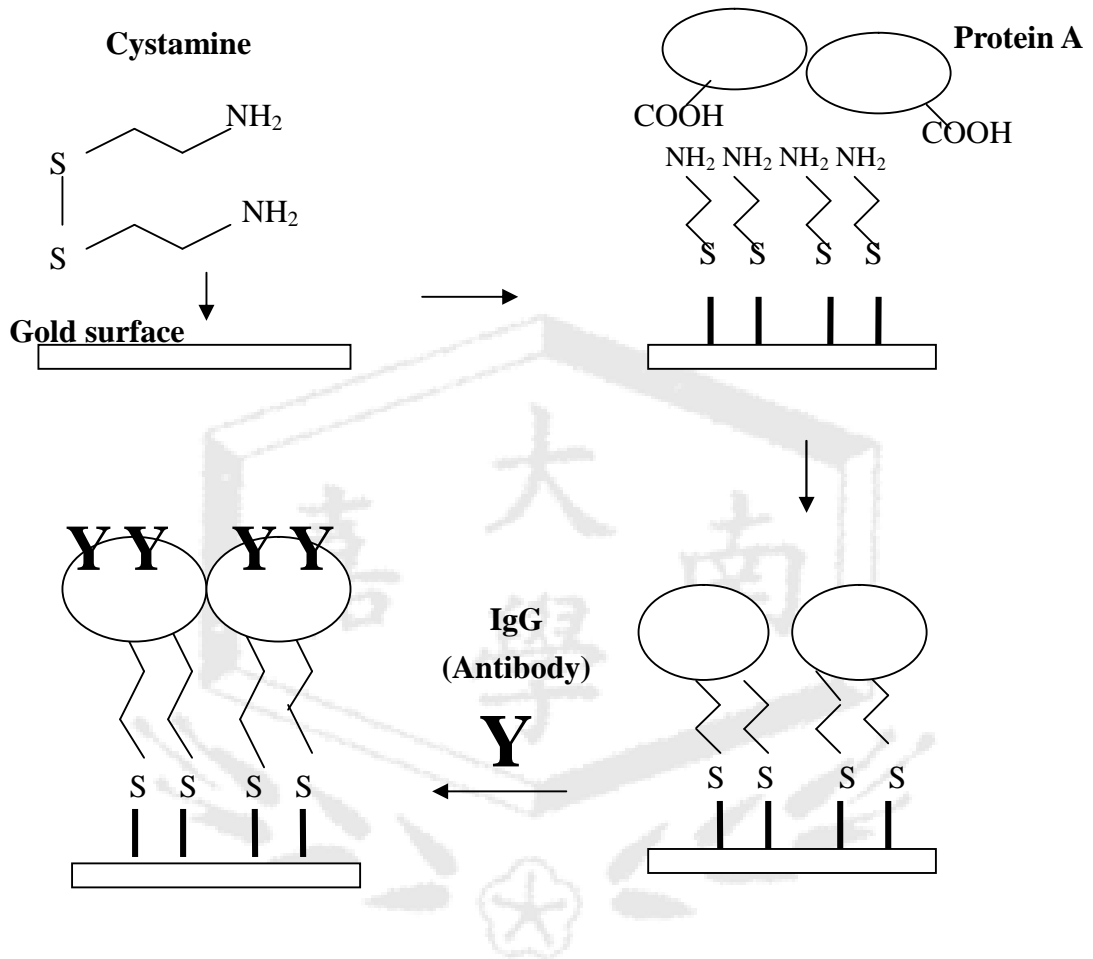


Fig.2 of Chou, S-F

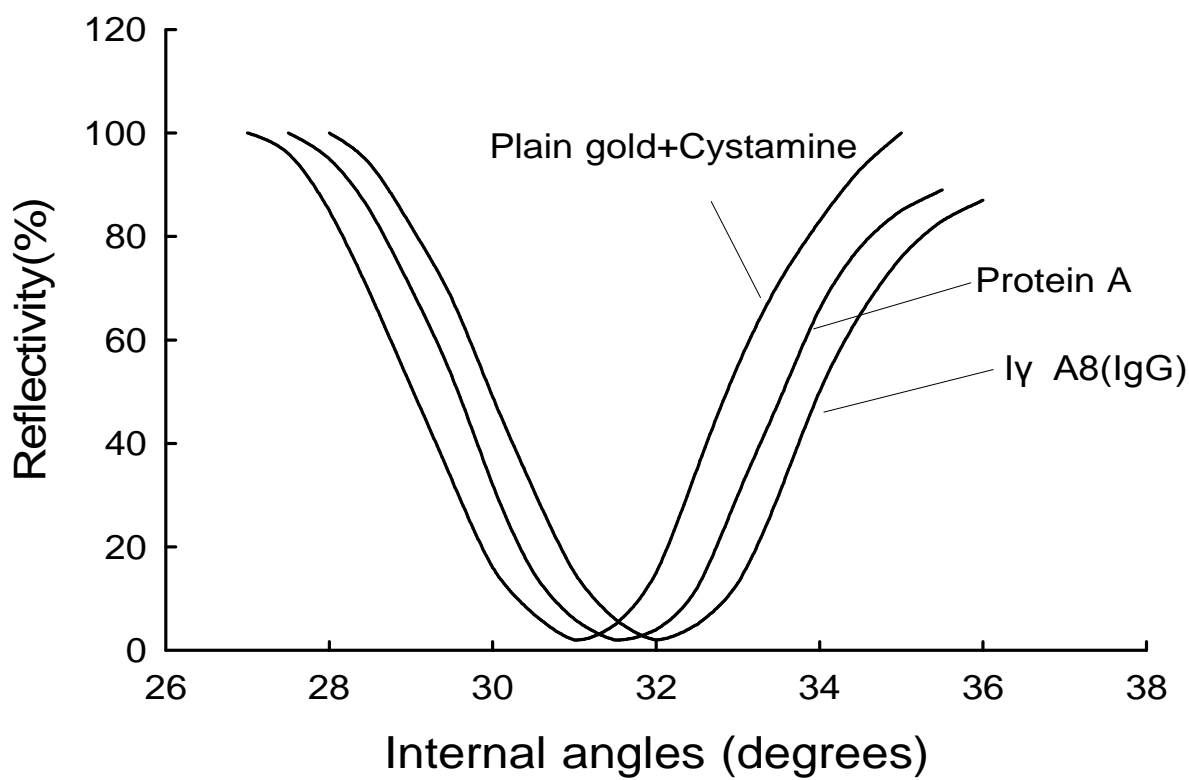


Fig.3 of Chou, S-F

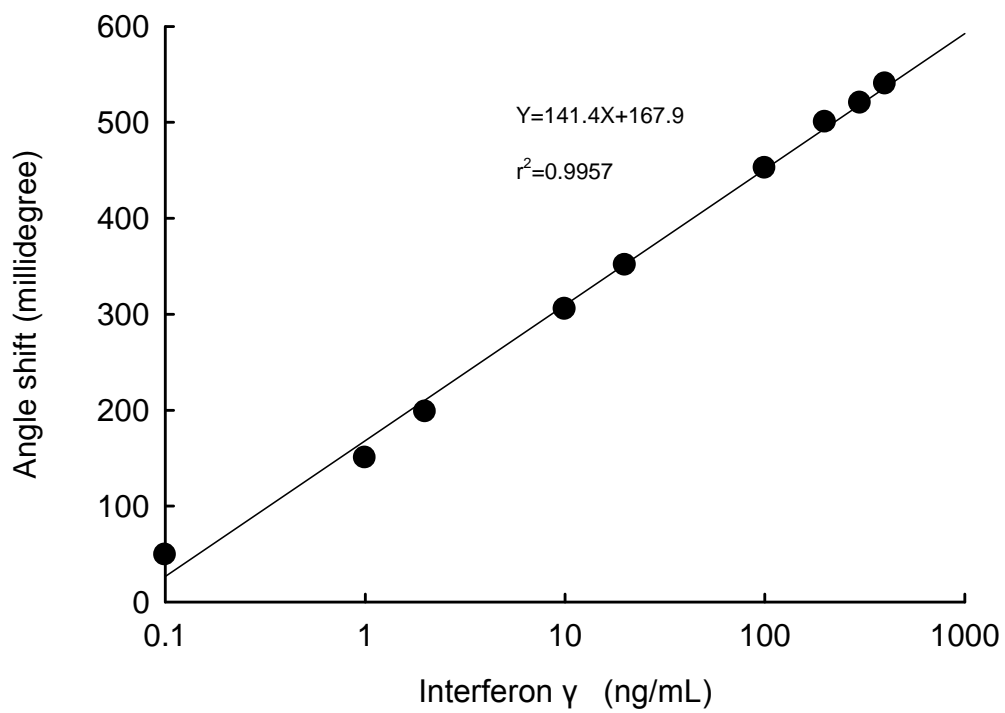
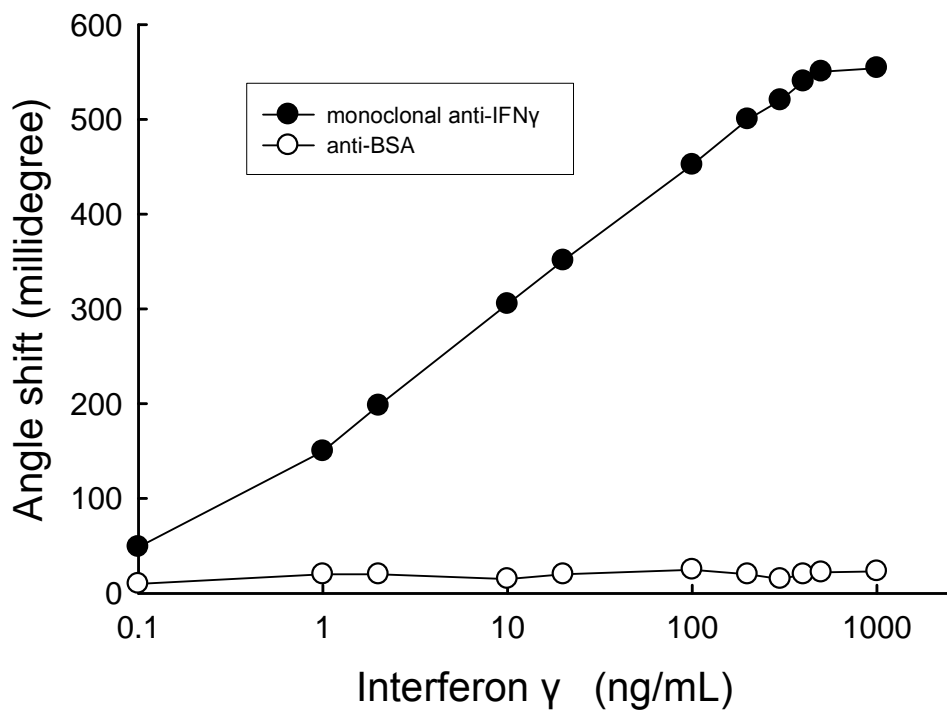


Fig.4 of Chou, S-F



Table 1. Precision of the interferon- γ determination by SPR immunoassay

Interferon- γ concentration, ng/mL	Angle shifts, millidegree					
	Mean	In PBS (n=3) ^a		In artificial human serum (n=3) ^a		
		SD ^b	CV ^c	Mean	SD ^b	CV ^c
0.1	52	5.00	9.62	49	8.03	16.4
1.0	148	8.12	5.49	150	21.2	14.1
2.0	200	10.1	5.05	198	27.5	13.9
10.0	310	15.2	4.90	305	32.0	10.5

20.0	350	16.8	4.80	351	36.2	10.3
100.0	456	20.2	4.43	452	35.0	7.74
200.0	506	25.9	5.12	500	36.7	7.34
300.0	530	28.0	5.28	520	34.9	6.71
400.0	551	29.5	5.35	540	35.8	6.63

^a Three replicates per specimen were measured.

^bSD means standard deviation.

^cCV means coefficient of variation.

